

THACS

TEWIN HORTICULTURAL ARTS & CRAFTS SOCIETY

NEWSLETTER SEPTEMBER 2008

Dear Members,

The summer has gone so quickly and the Autumn Show is now behind us. I will leave the show report and results to Anna Clark, who did a splendid job in organising everything, before, during and after the show. Many thanks to Anna and all the noble people who assisted her.

As you may remember, after the extremely successful Open Gardens event, when a significant profit was made, we said that a donation should be made to charity. The committee discussed this at length and decided that we would donate £100 to each of the following deserving causes within our village, namely, Tewin Memorial Hall, Tewin Village Stores and 'The History of Tewin by the People of Tewin' exhibition and their forthcoming book.

We are also reducing the cost of members' tickets for the *Back Gardens of Britain* gardening talk by Matthew Biggs in December. These will now be £3 instead of £5. The cost for non-members remains at £6.

THACS does not aim to be a profit-making society and therefore will be looking at other ways of utilising any surplus money for the benefit of their members in the future. The committee take very seriously the views of all our members and are grateful for any comments, or suggestions for their consideration.

Gay Cates (Chairman).

THACS Autumn Show in Tewin Memorial Hall on Saturday 6th September 2008

Considering the amount of wet weather during the summer and the run up to the Autumn Show on 6th September, the amount of produce that arrived on the day, even flowers that must have taken a real battering, was amazing. Once more the show was extremely well supported, with 61 exhibitors entering 718 exhibits. Congratulations to everyone who took part and thanks to all who turned up in the afternoon despite the weather. Hopefully the Autumn Show will encourage others to enter next time - it's such fun, and gives you a sense of achievement to see your exhibits on show - even if they don't come first! **THACS** covers such a wide variety of subjects from horticulture to photography, cookery to knitting, painting to flower arranging, that there really is something for everyone, and it was great to see lots of children's efforts. Their jewellery, cooking and bookmarks in particular were excellent, and thanks to the Brownies and Rainbows for their input again.

A special thanks to all the helpers setting up the hall and clearing away afterwards, to all the kind folks catering for both the judges' lunch and for the teas, and to the stewards who went round with the judges. It was so nice to see Ivor Williams at the presentation to award the Williams' Cup for Vegetables and Fruit to Dennis Tyler. Thanks to Gay Cates for handing out the prizes and to Patrick Holden for making such a good job of the auction at the close.

Lots of tickets for the Matthew Biggs talk in December were sold at the door by Pat Fulford, our Treasurer, who worked hard all day, and thanks to all the other committee members who helped in so many different ways. The winners are listed overleaf, but everybody did really well and must have worked very hard at their exhibits - so well done to all!

Anna Clark (Show Secretary).

<i>Special Awards for Highest Points - Adults</i>	<i>Winners</i>
St Peter's Church Trophy - Flower Arranging	Joint winners Tricia Lyons and Susan Whitbourn
Carlton Rose Bowl – Flowers	Pat Fulford
Ivor & Vaughan Williams Trophy - Vegetables & Fruit	Dennis Tyler
Shire Park Bowling Club President's Shield – Horticulture (Flower Arranging, Flowers, Vegetables & Fruit)	Dennis Tyler
Royal Horticultural Society Banksian Medal – Horticulture (Flowers, Vegetables & Fruit)	Mick Lloyd
Friends of Tewin Trophy - Arts & Crafts	Joint winners Diana Whitehead and Marian Meads
Nostalgic Photography Trophy	Alf Fulford
Merv Wilson Trophy - Photography (Spring and Autumn)	Jules Bridgman
Memorial Hall Trophy - Culinary	Hilary Tipping

<i>Special Awards for Highest Points - Children</i>	<i>Winners</i>
Tewin Cowper School Parents' Association Award - Children's Class	Madeleine Gouldstone
Children's overall winners in Horticulture, Arts & Crafts and Culinary	Madeleine Gouldstone
George Humble Crawford Award - Children's Photography (Spring and Autumn) - 11 to 17 year olds	Christie Lockyer-Webb

<i>Other Prizes - Adults</i>	<i>First</i>	<i>Second</i>	<i>Third</i>
Flower Arranging	Joint winners Tricia Lyons and Susan Whitbourn	Marylisa Webb	Pat Fulford
Flowers	Pat Fulford	Anna Clark	Pamela Bucknall
Vegetables & Fruit	Dennis Tyler	Mick Lloyd	Derek Bucknall
Arts & Crafts	Joint winners Diana Whitehead and Marian Meads	Linda Crawford	Anna Clark
Nostalgic photography	Alf Fulford	Linda Crawford	Michael Clark
Photography	Jules Bridgman	Gay Cates	Alf Fulford
Culinary	Hilary Tipping	Anna Clark	Joint third Marian Meads and Micki Browning

<i>Other Prizes - Children</i>	<i>First</i>	<i>Second</i>	<i>Third</i>
Highest points in Horticulture, Arts & Crafts and Culinary			
2 to 4 year olds	Freddie Glew		

5 to 6 year olds	Connie Marshall	Joint second Sophie Barfield and Carla Merison	Joint third Cerys Bryant-Fowler, Lucy Barrett and Joe Gouldstone
7 to 10 year olds	Madeleine Gouldstone	Harriet Gouldstone	Georgie Hale
11 to 17 year olds	<i>No entries</i>		
Photography			
7 to 10 year olds	Madeleine Gouldstone		
11 to 17 year olds	Christie Lockyer-Webb	Keir Lockyer-Webb	

Photography for the Spring and Autumn Shows 2009

To give people advance warning of the photography categories for next year, here are the details for the Spring and Autumn Shows.

The George Humble Crawford Award Photography Cup (children age 11-17yrs)	
<i>Spring 2009</i>	<i>Autumn 2009</i>
1. Food	1. Flowers
2. Local villages	2. Transport
3. Waterscape	3. The most amusing

The Merv Wilson Photography Cup in 2009 (adults)	
<i>Spring 2009</i>	<i>Autumn 2009</i>
1. Wildlife	1. Landscapes
2. Food	2. Flowers
3. Local villages	3. Transport
4. People in action	4. Night scene
5. Waterscape	5. The most amusing

Other Recent Events

Visit to Copped Hall Gardens, Essex on Saturday 9th August 2008

It was a very wet day for this visit, so it was just as well that the restoration of Copped Hall had progressed far enough to have most of the roof on! The 36 people were split into two groups, each with its own guide. The introductory talk was given in a large room that was heated by a wonderful large roaring log fire. The tour then started in the Georgian mansion and progressed into the Victorian extension. It was fascinating to see the building and its contents and to learn about its history and the restoration project. After a leisurely tour of the mansion, we had welcome refreshments before touring the grounds. The highlight there was the four-acre walled garden, flanked on one side by a 400 yard long traditional herbaceous border.

The guides were knowledgeable and informative and they successfully dealt with a wide-range of questions. The good mix of history and horticulture, served in the context of an inspirational restoration project, ensured that we all had an enjoyable visit.

ATTIMORE VETERINARY PRACTICE

WOOLMER GREEN

TEL: 01707 294203

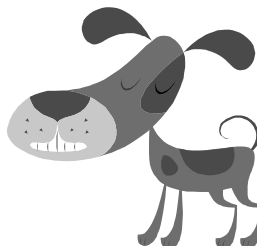
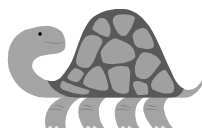
22a London Road, Knebworth SG3 6JP

Local convenient clinic with consultations by appointment, friendly and qualified staff, good parking and all the benefits of our 24 hour Hospital at Welwyn Garden City, should the need arise. (Telephone: 01707 331963).

We also sell a wide range of food and accessories.

The branch is open Monday to Saturday and provides complete health care plans for all ages.

We look forward to seeing you and your pet soon.



ATTIMORE

VETERINARY
GROUP



ATTIMORE VETERINARY HOSPITAL

Ridgeway

Welwyn Garden City AL7 2AD

Tel: 01707 331963

Fax: 01707 393970

22 The Common

Hatfield AL10 0ND

Tel: 01707 294201

10 Mutton Lane

Potters Bar EN6 2PA

Tel: 01707 294200

4 Castle Rise

Wheathampstead AL4 8HX

Tel: 01707 294202

22A London Road

Woolmer Green

Knebworth SG3 6JP

Tel: 01707 294203

Forthcoming Events

Guided Walk in St Albans on Sunday 12th October 2008

Bookings for this event are now closed. If you have already booked, please note that the walk will start outside the Old Town Hall (now Tourist Information Centre) in Market Place at 2pm and will take about 1hour 30 mins. Parking is available in the town centre or at the Verulamium.

Art & Craft Exhibition and sale of work in Burnham Green Hall Saturday & Sunday 15th & 16th November 2008

THACS are presenting an exhibition by local artists at **BURNHAM GREEN HALL** on **Saturday 15th and Sunday 16th November 2008** from **10am to 4pm** each day.

The work will include hand-turned wooden items by Victor Kendall, paintings / photos by Menna Searle, pottery by Elizabeth Buchanan, teddy bears / cards / paintings by Terry Brand, knitted items by Eleanor Lohr, textile bags by Joan Kendall, horse shoe craft by Tom Hill, miniature oil paintings by Linda Williams, Christmas floral art / gifts by Sandy Leys, jewellery by Emily Glidden and photos / paintings by Peter Gregg.

ENTRY IS FREE and refreshments will be available, so please come along and support your local artists, admire their work and buy a few Christmas presents.

**Talk entitled *Back Gardens of Britain*,
by Matthew Biggs in the Memorial Hall on Monday 8th December 2008**

We are delighted to announce that **Matthew Biggs** will be talking about the “**Back Gardens of Britain**” in the Memorial Hall on the evening of **Monday 8th December 2008, starting at 8pm.**



Matthew lives in Hertfordshire and so is a local gardening celebrity. As a professional gardener for over 25 years, he has achieved considerable success as a horticultural judge, lecturer, TV presenter, radio presenter and author. Matthew also travels the world lecturing and leading gardening tours.

Currently Matthew is a regular panellist on BBC Radio 4's *Gardeners Question Time* and writes regularly for several gardening magazines. In addition, he has written several gardening books which he will bring to the talk, giving us an opportunity to purchase signed copies.

The lecture aims to enlighten you to the treasures to be found in the back gardens of Britain and discover what lessons can be learned from the passions of their owners for plant collecting, vegetable growing and design. It will introduce you to some of the fascinating characters who have created their dreams, from suburban back gardens to allotments and inner city roof gardens. Let their enthusiasm encourage and inspire you to continue developing your own garden and increase your enjoyment of the greatest hobby in the world!

The prices for tickets for this event are **£3 per person for members** and £6 per person for non-members. The original price for members was £5 but the financial success of the Open Gardens event in June has enabled the **THACS** committee to offer this reduced price to members. (Refunds of the price difference will be provided to those members who have already purchased tickets.) If you wish to come, then please complete the relevant form (on the last page of this newsletter) and send it with your cheque or cash, to Pat Fulford by **1st December 2008**. Tickets will be on sale at the door if any are still available but, as this event is expected to be popular, please book early to avoid disappointment.

Future Events

Jewellery workshop

Would you be interested in taking part in a **THACS** Jewellery workshop?

Charlotte Callaghan, who judged the Jewellery categories at the Autumn Show this year, runs classes at the shop in Knebworth, and would be happy to take a workshop at Tewin or Burnham Green.

If you would like to learn how to make your own jewellery, please complete the form at the end of this newsletter and send or drop off the form to Anna Clark at Tewin Orchard, 1 Upper Green, Tewin AL6 0LX, or to Gay Cates at 6 Harwood Close, Tewin AL6 0LF.

If we get a positive response, we will book the event and contact you. Please let us know by **10th October** so that we can go ahead with plans.

CATBELLS

TEWIN WOOD

Quality in Tourism
Four Star

BED & BREAKFAST

Private apartment in a woodland garden

With ample parking for 4 cars

Telephone / Fax: 01438 798412

DATCHWORTH STORES

2 Datchworth Green Tel: 01438 813467

(We are on the corner of the crossroads)

Monday – Friday: 8.30am 7.00pm

Saturday: 8.30am – 7.30pm

Sunday: 9.00am – 5.00pm

Wide range of Wines, Beers & Spirits, Cold Drinks
Groceries, Freezerpacks, Pet Foods, Braughing Sausages

Dry Cleaning Agency, DVD Library, Stationery
Coal & Bottled Gas, Water Softener Salts

Most Major Credit Cards Accepted

PayPoint Agent

National Lottery Tickets

Children's Corner

ORIGAMI SWAN

Fold a square piece of paper diagonally in half then unfold.

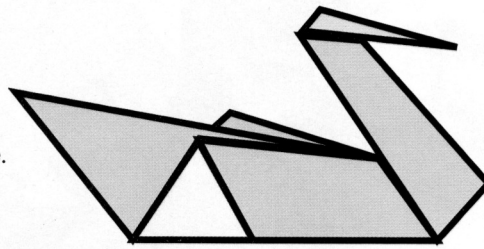
Fold the lower edges to the centre. Making a kite shape.

Unfold and turn the piece of paper over. Refold the edges so they are on top of each other.

Create a neck by folding the triangle at the bottom of the kite up.

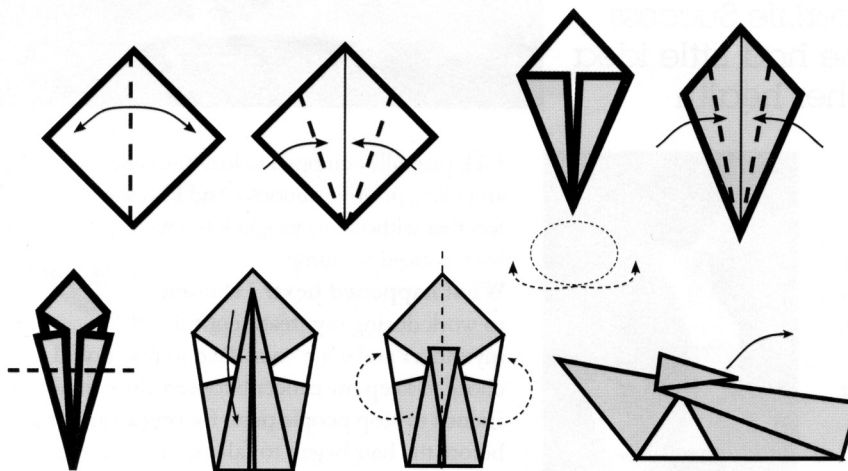
Make a small beak by folding the tip of the kite down.

Fold the piece of paper in half



horizontally, along the body and through to the beak.

Pull the beak towards you and pull out the open edges of the body – your swan should now be complete!



Jokes

The Duck

A woman took her very limp duck to the vet. She laid it on the examination table. The vet pulled out his stethoscope and listened to the bird's chest. After a moment or two, he shook his head sadly and said, "I'm so sorry, your duck has passed away." The distressed owner asked "Are you sure?", "Yes, I am sure. The duck is dead," he replied. "How can you be so sure," she exclaimed, "I mean, you haven't done any testing or anything. He might just be in a coma." The vet turned around and left the room and returned a few moments later with a black Labrador. As the woman looked on in amazement, the dog stood on his hind legs, put his front paws on the table and sniffed the duck from top to bottom. He then looked at the vet with sad eyes and shook his head.

The vet patted the dog and took it out. He returned a few moments later with a cat. The cat jumped up on the table and also sniffed delicately at the bird from head to foot. The cat then sat back on its haunches, shook its head, meowed softly and strolled out of the room. The vet looked at the woman and said, "I'm sorry, but as I said, this is most definitely, absolutely 100% certifiably, a dead duck." Then the vet turned to his computer terminal, hit a few keys and produced the bill, which he handed to the woman. The duck's owner, still in shock, took the bill. "£100" she cried, just to tell me my duck is dead!!". The vet explained "I'm sorry but if you'd taken my word for it, the bill would have been £20, but with the Lab Report and the CAT Scan it's £100."

Recipes

These recipes are from Tewin stores who stock most of the necessary ingredients.

Steak with Guinness

Preparation and cooking time: 2¼ hrs

Serves: 3

Ingredients

500g stewing steak

125ml Guinness

50g butter

250ml beef stock

2 onions, sliced

3 potatoes, peeled and sliced

Thyme, sage, parsley, bay leaf

Salt & pepper

Method

1. Brown the meat in half the butter, taking care not to burn it. Add the onions and cook for 2/3 mins more.
2. Add the herbs, tied together if fresh, pour over the Guinness and stock and season to taste.
3. Top with the potatoes. Cover tightly and simmer gently for 2 hours until ready.
4. When cooked, the potatoes will have disintegrated and thickened the juices. If you wish to make this thicker, make a roux by mixing together 25g plain flour and 25g soft butter and mix into the stew. Enrich the stew with the remaining butter.
5. Serve sprinkled with chopped parsley and additional vegetables / mashed potato.

The Pet and Garden Centre

5 Howardsgate
Welwyn Garden City
Herts
01707 320577

Suttons Seeds & Onion Sets

Autumn Bulbs

Bird Tables & Feeders

Wild Bird Food

Live & Freeze-dried Mealworms

Pet Accessories & Feeds

Live Reptile Food

THACS members spending over £10 on gardening goods (not on special offer) will receive 10% discount. Discount does not apply to Pet Food.

Raspberry Fool with Strawberries

This is a very easy dinner party desert.

Preparation time: 15 mins, plus chilling.

Serves: 6

Ingredients

500g strawberries

250g raspberries

3 tbsp icing sugar, sifted

284ml double cream, whipped

Method

1. Place the strawberries in 6 individual bowls.
2. Rub the raspberries through a nylon sieve, then mix in the icing sugar. Whisk into the cream, then spoon over the strawberries.
3. Chill for at least 20 mins, then serve.

Photography Tips

Landscapes and Seascapes

When photographing a landscape or seascape, avoid having something on the centre-line of the picture:- move it a little to the left or right. The same goes for the skyline, which should be positioned either above or below the centre-line. Then try to include something in the foreground, for example, an overhanging tree branch, a few rocks or a clump of grass. This gives the picture some depth.

An important thing to remember is that a picture is greatly improved by a lead-in from the bottom left-hand corner of the picture, curving towards the distance. This can be a stream, a path, a row of trees or hedge. When looking at a picture, the eye will follow the lead-in from the foreground to something in the far distance, a hill, a tree or ship. Again, this gives the picture a feeling of depth.

When you focus your picture, point your camera downwards towards mid distance, set the focus, then lift it up to take the picture. The foreground will then be sharp and correctly exposed.

ADVERTISEMENTS

Please support the advertisers and be sure to mention **THACS** and that you saw their adverts in our Newsletter or Show Schedule when purchasing items or services.

Card Inspirations

Everything you need to make beautiful greetings cards

Loads of new products for card making
and scrapbooking

Rubber Stamps, Papers and Cards,
Peel Offs, Stickers, Stencils & Lots More.

Visit Our Shop at Tewin Hill Farm
Mon – Sat 10am - 4pm

WEEKLY CLASSES AND FREE DEMOS

Tel: 01438 717000

*PRIVATE PARTIES AND CORPORATE GROUPS
CATERED FOR*

FREE GIFT ON PRESENTATION OF THIS ADVERT

WWW.CARDINSPIRATIONS.CO.UK

**Matthew Biggs talk about the “Back Gardens of Britain”
in the Memorial Hall on the evening of Monday 8th December 2008.**

Name(s).....
Address.....
Tel. No.....e-mail address.....

Are you a member of **THACS**?.....

Number of members..... Number of non- members.....

I enclose £..... (£3 for members and £6 for non-members – cheques made out to **THACS**).
Please send to Pat Fulford, 27 Bishops Road, Tewin AL6 0NP by **1st December 2008**.

.....

Jewellery workshop

I would be interested in taking part in the workshop.

Name(s).....
Address.....
Tel. No.....e-mail address.....

Please send or deliver to Anna Clark at Tewin Orchard, 1 Upper Green, Tewin AL6 0LX, or to
Gay Cates at 6 Harwood Close, Tewin AL6 0LF, by **10th October 2008**.

.....

If you have any comments about this newsletter, please contact the **THACS** Newsletter editor,
Ray Keppler. (Email ray@raykeppler.wanadoo.co.uk, telephone 01438 717545).